
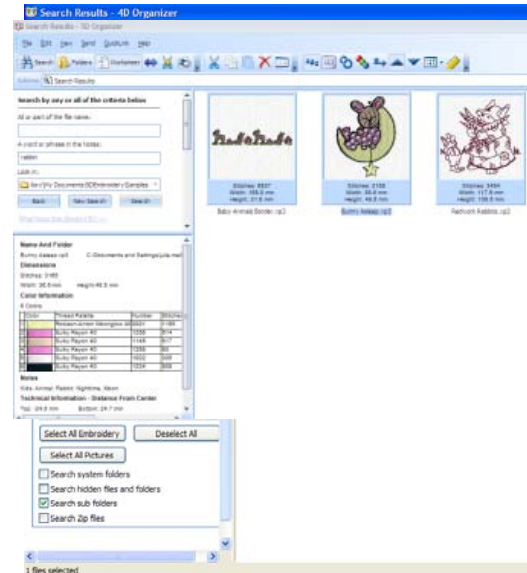


5D™ Embroidery Software Owner's Class

5D™ Organizer

1. Open 5D™ Organizer .
2. Under Folders, find your MyDocuments\5DEmbroidery\Samples folder.
3. Click Search at the top left of the screen.
4. In the box below 'A word or phrase in the Notes:' type 'rabbit'.
5. Scroll down (if necessary) to the underlined words and choose More advanced options. We only need embroidery designs, so click Deselect All, then click Select All Embroidery.
6. Click the word Search found in the middle on the left hand side of the screen. 5D™ Organizer will now look for all embroidery designs in your samples folder that have the word 'rabbit' added to the Notes section.
7. Once all the designs have appeared, find BunnyAsleep.vp3 and select it.





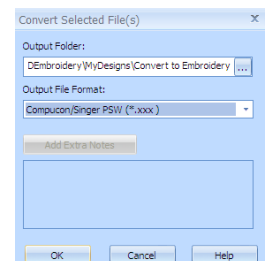
Convert Thread Range

8. Click File, Convert Thread Range and the Convert Thread Range box will open.
9. Leave the Output folder as MyDocuments\5DEmbroidery\MyDesigns\.
10. Under Thread Range, click the drop down arrow and choose thread you use then click OK.
The BunnyAsleep.vp3 file that is now in your MyDocuments\5DEmbroidery\MyDesigns\ folder will be in the thread range you use.





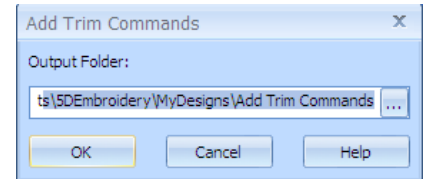
Convert to Embroidery

11. With BunnyAsleep.vp3 still selected, click Convert to Embroidery  and the Convert Selected Files folder will open.
12. Change the Output Folder by clicking Browse . The software took you to your MyDocuments\5DEmbroidery\MyDesigns folder automatically.
13. With the MyDesigns folder selected, click Make New Folder. A new folder will appear below your MyDesigns folder. Left click on the name New Folder then right click and choose Rename.
14. Type 'Convert to Embroidery' then click OK. Your new folder is created and has been added to your Output Folder on the Convert Selected Files dialog box.
15. Under Output File Format: click the drop down arrow and choose Compucon/Singer PSW (*.xxx). Notice the Add Extra Notes to Convert Files has grayed out because this .xxx format does not remember Notes.
16. Click OK and the design will be converted to the .xxx format.




Add Trim Commands

17. With BunnyAsleep.vp3 still selected, click Add Trim Commands . The Add Trim Commands dialog box will open.
18. Change the Output Folder by clicking Browse . The software took you to your MyDocuments\5DEmbroidery\MyDesigns folder automatically.
19. With the MyDesigns folder selected, click Make New Folder. A new folder will appear below your MyDesigns folder. Left click on the name New Folder then right click and choose Rename. Type 'Add Trim Commands' then click OK. Your new folder is created and has been added to your Output Folder on the Add Trim Commands dialog box.
20. Click OK, and the BunnyAsleep.vp3 with Trim Commands added will be placed in this new folder.



Find All Three Files

21. Click Folders  at the top left of the screen.
22. Click Desktop, My Documents, 5D Embroidery, MyDesigns.
23. BunnyAsleep.vp3 should be found in this folder. Click on BunnyAsleep.vp3 and in the Worksheet area on the left side of the screen, all threads should be converted to the thread range you selected.
24. Click your Add Trim Commands folder under MyDesigns in the Folder list.
25. This BunnyAsleep.vp3 will not look any different but it has added trim commands. You can see the actual trim commands if you have 5D™ Stitch Editor software, otherwise, you will watch them in action on your creative vision™ or creative 4.0.
26. Click your Convert to Embroidery folder under MyDesigns in the Folder list.
27. Here you will find the BunnyAsleep.xxx file.

