



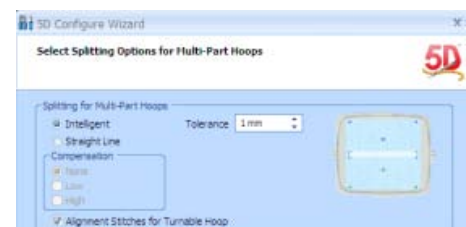
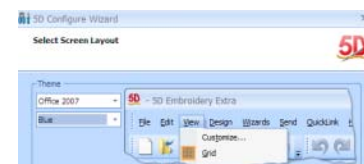
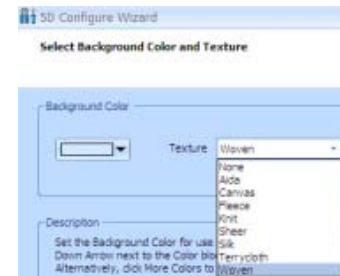

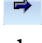
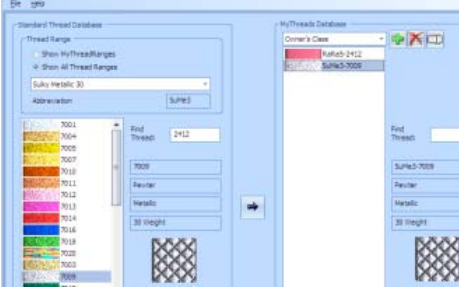
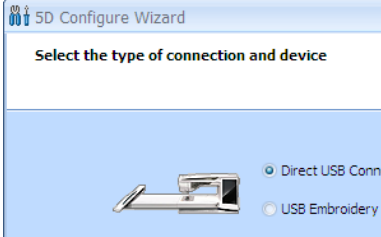
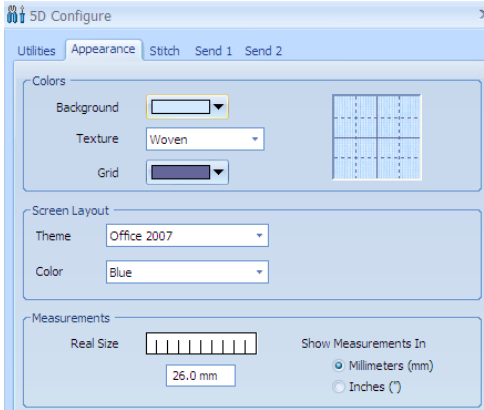


5D™ Embroidery Software Owner's Class

5D™ Configure

1. Open 5D™ Configure .
2. Click the 5D™ Configure Wizard .
3. Click Next.
4. On the Background Color and Texture page, click the drop down arrow and change the fabric to fabric you normally embroider on. Notice the new fabric type – Aida.
5. Click Next.
6. Leave Grid Color as is, just click Next.
7. Set the Screen Layout. This allows you to change both options. Change the Theme and then set the color you prefer. The default is Office 2007 – Blue.
8. Click Next.
9. Take a millimeter ruler and measure the Real Size to set the correct real size. This will affect the display of your embroidery designs as well as your print outs.
10. Click Next.
11. On the Select Measurement Units, select Millimeters or Inches. The alternative units will be shown when you hover the pointer over a measurement!
12. Click Next.
13. Selecting Splitting Options for Multi-Part Hoops is now found in 5D™ Configure! This feature is now used in multiple modules. Choose Intelligent for your splitting line and set Tolerance to 1 mm.
14. Also, check Alignment Stitches for Turnable Hoops. This allows you to easily line up split designs.
15. Click Next.
16. Set the Output Format to Husqvarna Viking/Pfaff (.vp3) then click Next.
17. Set the Import Thread Range to a thread range you have. This will only affect designs brought into your 5D™ Software in file formats that don't retain thread manufacturer information – like the .hus file format.
18. Click Next.
19. On the Select My ThreadRanges page, click Thread Manager .
20. Notice in the MyThreads Database, you can now add multiple MyThread Ranges.
21. Click Add New Range .
22. Click and drag to highlight My Threads 2 then delete it.
23. Type Owner's Class then click OK.
24. On the left side of the screen, click the drop down arrow next to My Threads and choose Robison-Anton Rayon 40.
25. Type 2412 (Azalea) in the Find Thread box.



26. Click Move to MyThreads  to add to your Certification Class Thread Database.
 27. Select Show All Thread Ranges.
 28. Click the drop down arrow and choose Sulky Metallic 30.
 29. Type 7009 (Pewter) in the Find Thread box.
 30. Click Move to MyThreads  to add to your Owner's Class Thread Database.
 31. Close Thread Manager by clicking on the x in the upper right corner. Notice Certification Class has been added to your Thread Range list.
 32. Click Next.
 33. On the MyMachines page, click Add.
 34. Leave the Brand as Pfaff.
 35. Click the drop down arrow next to creative vision and choose All Pfaff machines. This will give you all the accessory modules for all the sewing machines you support.
 36. Click OK then click Next.
 37. Leave the checkmark in Include all hoops for installed machines in MyHoops then click Next.
 38. No change is needed on the Select MyHoops page, just click Next.
 39. On the Summary page, everything has been added to show you all the decisions you have set so far. Click Back to make any changes or if satisfied, click Next.
 40. On the Configure Send 1 option page, click Next.
 41. Leave the Brand as Pfaff and the Machine to creative vision then click Next.
 42. Leave the connection as Direct USB Connection then click Next.
- 
43. Leave Start Automatically selected for Embroidery Machine Communication Startup Options. You will not need to remember to turn on the Embroidery Machine Communications – it will start up automatically when you turn on your computer.
 44. Click Next then Next again.
 45. Put a checkmark in Go to finish on the configure Send 2 options page.
 46. Click Next then click Finish to close the 5D™ Configure Wizard.
- 
47. Click on the Appearance and Stitch tabs to see where you can change settings you have made.
 48. Click Send 1 to see the new look to the Send tabs.
 49. Click OK to close 5D™ Configure.
- 

New Features to Remember

- New Background – Aida cloth.
- New choices in Themes.
- Multiple MyThreads!
- Setting the measurements to inches or millimeters doesn't matter. You can see both types of measurements by hovering over the numbers.
- Splitting information is now in 5D™ Configure.
- New look to Send options.