

Intermediate Software – 4D Vision – Scanning in Your Fabric for Appliqué

By:
Julie Mallory
Embroidery Software Education

In this exercise, we will take a piece of fabric and add it to 4D Vision as Fabric. This will allow us to see our appliqué fabric in appliqué embroidery designs before ever stitching out the designs on our Pfaff embroidery machine.

Supplies:


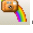


Pfaff creative 4D Embroidery Extra or Pfaff creative 4D Suite
Pfaff Embroidery Machine

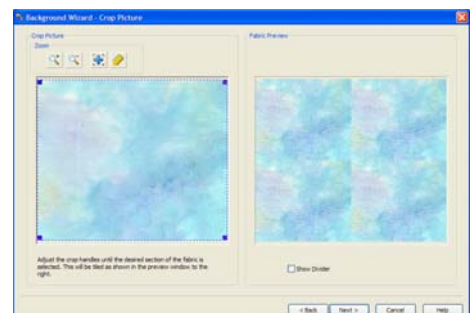
Please Note: The fabric that was used in this example is a hand dyed piece of fabric, thus it is not copyrighted. Please understand you can scan your fabrics and view what they would look like as part of your appliqué embroideries, but it is NOT ok to reproduce the fabric or digitize patterned fabrics without permission from the fabric manufacturer. A general rule of thumb, if you're not sure, don't do it.

Download the Picture

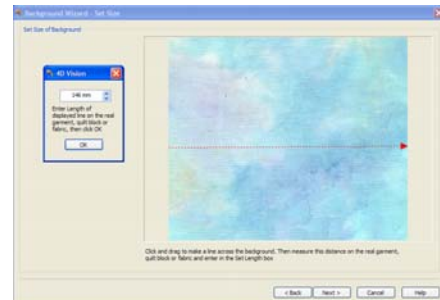
1. Download the Hand Dyed Fabric.jpg file to your C:\4DEmbroidery\MyPics folder.

Add a New Background








2. Open 4D Embroidery Extra .
3. QuickLink to 4D Vision .
4. Under Background, choose Add New Background.
5. Set the Type to Fabric then click Next.
6. Click View Picture .
7. Browse  to C:\4DEmbroidery\MyPics then click OK.
8. Find Hand Dyed Fabric.jpg and select it then click Next.
9. No rotation is needed, just click Next.
10. On the Crop Picture page, drag the corners to select the entire fabric block. If you had a print with a repeating pattern, you would move the crop box until one section of the repeat was selected.

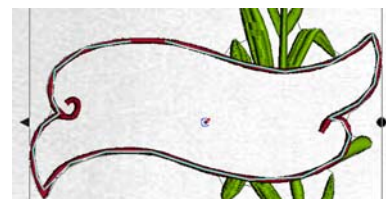
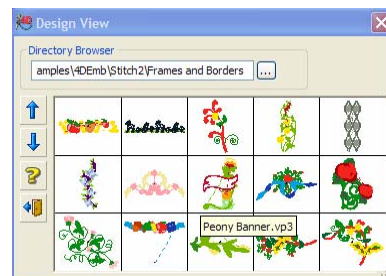



11. Leave Show Divider unchecked then click Next.'
12. On the Set Size page, because this is a hand dyed fabric, it is a little challenging to define an area to set the length.
13. Starting at the far left, click and drag the red arrow all the way across the fabric to the far right side.
14. Enter 146 mm in the 4D Vision pop-up Enter Length box then click OK. 146.0 mm will appear in the Length of displayed line box.
15. Click Next.
16. On the Set Background Name page, the Fabric Category is Preset to MyFabrics. The Background Name is Hand Dyed Fabric. Leave everything as is, then click Next.
17. On the Load Embroidery page, we will not be adding an embroidery design to this fabric, so just click Finish. The fabric will fill the background.



We want to use this fabric for our appliqué embroidery design.

18. Click New  to open the Background Wizard again.
19. Choose Load Previously Saved and choose Garment for the Type then click Next.
20. Click View .
21. Browse  to C:\4DEmbroidery\System\Bgrounds\Garments\General\Tote Bags\ then click OK.
22. Choose the White Tote Bag.gbg then click Next.
23. On the Load Embroidery page, click View Embroidery .
24. Browse  (if necessary) to C:\4DEmbroidery\Samples\4DEmb\Stitch2\Frames and Borders then click OK.
25. Select Peony Banner.vp3 in the second row, third column then click Finish.
26. Move the design in 4D Vision to be centered on the bag.
27. Zoom In  on the banner section of the design.
28. Click Select Appliqué .
29. Click to place the first point on the red satin banner border.
30. Continue to left click to place points along the red banner border until you arrive back at the first point then right click. Don't worry about being exact, it's just to 'show' you what the appliqué fabric will look like.
31. When you right click, the Picture Viewer will open.



32. Browse  (if necessary) to C:\4DEmbroidery\System\Bgrounds\Fabrics\MyFabrics\ then click OK.
33. Choose Hand Dyed Fabric.fbg and the banner will fill with the fabric!
34. Click File, Print Preview to see the design with the appliqué fabric showing in the banner area. You can print out this page only in 4D Vision!
35. Click Close to close the Print Preview page.

