


5D™ Card Shop: Fabricate Your Greetings for Lasting Memories

By Janie Lantz, Education Software Specialist



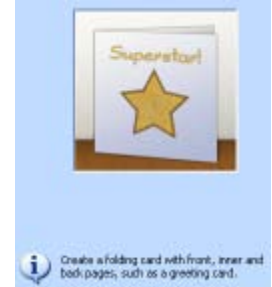
Fabric greeting cards from fast templates make many lasting memories! Customize your cards with your own words, or exclusive PortraitStitch! Embellish cards using accessory feet and trims. The only limit is your imagination.

Open the 5D™ Embroidery Software Modules

1. Open **5D™ Embroidery** .
2. Click **5D™ Card Shop**  in the QuickLink Toolbar.

New Project Wizard has Themed Templates

3. In New Project Wizard – Select Theme and Layout, select the **Theme** as **Birthday**.
4. Card Layout options are Folding, Double-Sided or Single-Sided.
5. Select **Single-Sided** for the **Layout**. Notice the preview and description change.
6. Select **Folding Card** to make a four-sided card with Front, Inner and Back pages.
7. Click **Next**.
8. In New Project Wizard – Select Template, you can Show Templates by Type, Search, or scroll through all available templates.
9. Click the **Show Templates by Type** drop-down menu. Notice that multiple types are listed.
10. Select **Photo** in **Show Templates by Type**.
11. Select the first template, **Birthday Boy Photo 1 Portrait**.
12. Click **Next**.



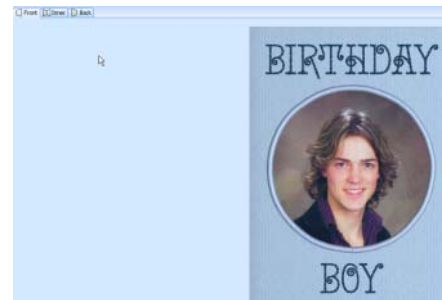
Choose Card Size, Hoop Size and Number of Hoopings

13. In New Project Wizard – Select Size and Hoop, you have three sets of options.
14. **Select Size** has five size choices.
15. **Select Hoop** allows you to specify a hoop size.

16. **Hoop Options** allow you to specify whether you want to stitch in a single hooping or multiple hoopings. However, depending on the size and hoop chosen, some embroideries may only be sewn in multiple hoopings.
17. Click **Small** in **Select Size (125mm x 175mm, 5 x 7")**.
18. Click **Change Hoop**.
19. Change **Hoop Group** to **PFAFF® creative sensation™**.
20. Change **Hoop Size** to 360mm x 350mm - *creative™* Grand Dream Hoop.
21. Set **Orientation** at **Vertical**.
22. Click **OK** to Change Hoop.
23. In **Hoop Options**, select **Single embroidery**.
Note you may also choose Multiple embroideries, to stitch the designs out one hooping at a time.
24. Now change Select Size to **Extra Large**.
25. Click **Change Hoop**.
26. Change the **Hoop Size** to 360mm x 200mm - *creative™* Deluxe Hoop.
27. Set **Orientation** at **Vertical**.
28. Click **OK**.
The Hoop Options settings are grayed out, as you can only stitch in multiple embroideries at this size, so Hoop Options are set automatically, providing multiple embroideries.
29. In **Select Size**, choose **Small (125mm x 175mm, 5 x 7")**.
30. Click **Change Hoop**. Change Hoop Group to **PFAFF® creative sensation™**.
31. Change **Hoop Size** to 360mm x 350mm - *creative™* Grand Dream Hoop.
32. Set **Orientation** at **Vertical**.
33. Click **OK** to **Change Hoop**.
34. In **Hoop Options**, select **Single embroidery**.
35. Click **Finish**.

Adjust the Words on the Card Front

36. The card finishes in the work area.
37. In the upper left corner, this card has three tabs, one for the Front, one for the Inner, and one for the Back.
38. In the Any tab, each **Text area** may be **selected** and **edited**.
39. The lettering font in each card is preset to properly fit the template, but you can change elements such as size, the content of the text, and text color.
40. Because this card Front has a **PortraitStitch**, you can also select and edit an **Image Properties field**.



41. Choices for **PortraitStitch** include a **PortraitStitch Embroidery**, or **Printed Fabric Appliqué** or **Printed Ink transfer**.

42. Place the cursor over the word 'Boy' until the cursor shows a letter A attached, indicating the text box.

43. Left click once to **select the text box**, then right click to **open the Text Properties** box.

Alternatively, you can double-click over the box when the cursor shows the A.



44. In **Letter Properties**, click and drag to **highlight** the word **BOY**. Type in **FRIEND**.

45. Click the **thread sample** in the color worksheet to open the **Color Selection** box.

46. Select **Show All Thread Ranges**.

47. Click the drop-down menu and choose **Robison-Anton Rayon Vari 40**.

48. Click in **Find Thread** and type **2350**, which is 3CC Blue variegated.

49. Click **OK** to **Color Selection**.

50. Click **Center**  in **Alignment**.

Note the Density setting. A lower number will increase the density so the stitches are closer together. A higher number will decrease the density because the stitches have more space between them.

51. Set **Density** at **10**.

Note: The embroideries and letters in 5D™ Card Shop are set to a lighter density to stitch more appropriately on fabric cards or hand-made high-rag content craft paper.

52. Click **OK** to **Text Properties**.

Select and Adjust the Inner Card Pages

53. Select the **Inner** tab.

54. Place the cursor over **Your Text Here**. Double-click to **open Text Properties**.

55. Click and drag to **highlight the existing letters** and press the keyboard **DEL** key to remove them.

56. Type in '**Many**' (use Ctrl + Enter to go to a new line).

57. On the second line type '**Happy**' (use Ctrl + Enter to go to a new line).

58. On the third line, type '**Returns**'.

59. Click the **thread sample** in the color worksheet to open the **Color Selection** box.

60. Click a **dark blue** in the **Standard Theme** of Quick Colors.

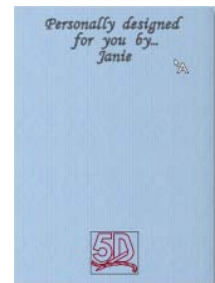
61. Click **OK** to **Color Selection**.

62. Click **OK** to **Text Properties**.



Personalize the Card Back

63. Select the **Back** tab.
64. Left click to **select** the **top text**, then right click to **open** (or double-click with the A attached to the cursor).
65. Type in **your name** at the end of the text, using Ctrl + the Enter keyboard key to create another line as needed.
66. Change the **color** if desired.
67. Click **OK**.
68. Place the cursor over the **5D™ logo**. Notice the cursor has a flower attached to indicate the field contains an embroidery.
69. Left click to select the **5D™ logo**, then right click to **open** (or double-click with the A attached to the cursor).
70. Change the embroidery **thread color** to a **deep red**.
71. Click **OK** to **Design Properties**.



Save the Embroidery and Print

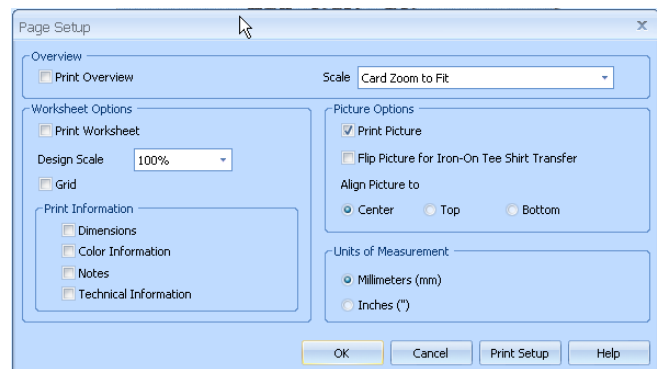
72. Click **Save As** .

Because we chose a creative™ Grand Dream Hoop embroidery, the design is automatically split and prepared for the turnable hoop!

73. Type **PhotoFriend** in the **File Name**.
74. Browse to the folder of your choice, and then click the **Save** button.
75. Since we left the default photo picture in the card, we'll **print** the photo on **printer fabric**.
Note: if you wish to print the image, you must print before you exit 5D™ Card Shop. If you exit before printing, you will need to use the Wizard to recreate the card again in 5D™ Card Shop.

76. Select **File/Page Setup** in the top menu.
77. In **Page Setup**, uncheck all options except **Print Picture** in Picture Options.
78. Notice you can choose to print Center, Top or Bottom.

TIP: If you are creating many cards with the same layout and a small enough picture, select Top and print on printable fabric. Allow the print to dry, then select Bottom and print again on the same piece of fabric, to get two prints on one piece of fabric.



79. Click **OK**.
80. Click **File/Print Preview** to see how the image will Print.

81. If you are ready to create your card, click **Print**.
82. If not, **Close** the **Print Preview**.
83. Select **File/Page Setup** in the top menu.
84. In **Page Setup**, check **all but the Picture Options**.
85. Click OK.
86. Select **File/Print Preview** to see the templates. Print if connected to a printer, or Cancel if not.

Though the template-driven format makes 5D™ Card Shop fast and easy to use, you also have many options!

With over 500 templates, plus additional template sets, some free and some for purchase, in the 5D™ Purchase Center, you can create many custom-made greeting cards with personal sentiments and special photos!

For additional resource materials, click the Windows™ Start icon, then select All Programs/5D Embroidery System/Guides/Reference/MainModules. Select the 5D Card Shop Reference Guide PDF file for 86 pages of instructions, lessons, and a brief overview of templates.

You can view or print a complete template guide from the Windows™ Start icon/ All Programs/5D Embroidery System/Guides/Sample/Fonts&Frames, then choose the 5D Cardshop Templates Guide PDF file.

For video clips with a plethora of creative card designs, plus additional project ideas incorporating card templates, log onto your internet provider, then click the 5D™ Learning Center link from 5D™ Embroidery.

