



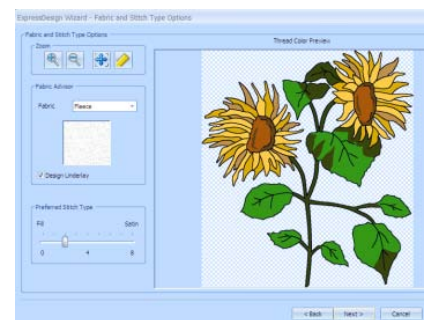
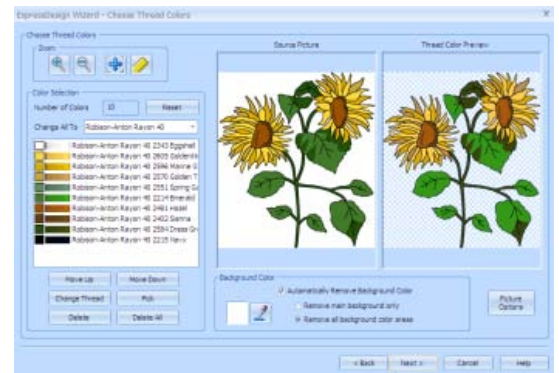




5D™ Embroidery Software Owner's Class


5D™ Design Aligner

1. Open 5D™ Embroidery Extra .
2. Click Hoop . Put a check mark next to Enter Hoop Size.
3. For the Hoop Size, set the Width to 300 and the Height to 255. Then click OK.
4. Click Express Design Wizard  and the Wizard will open.
5. Click Create Express Embroidery, and then click Next.
6. Click View Picture . Browse to MyDocuments\5DEmbroidery\Samples\5DEmb\Pics2\Flowers.
7. Select the sunflowers (first design 1CFI001.png) then click Next.
8. On the Rotate Picture page, click Next.
9. On the Crop Picture page, click Next.
10. On the Reduce Colors page, click Next.
11. On the Choose Thread Colors page, put a check mark next to Automatically Remove Background Color. Notice there are white areas that will have stitching in them unless we choose Remove all background color areas.
12. Click Remove all background color areas and click Next.
13. On the Fabric and Stitch Type Options page, set the fabric to Fleece, leave Design Underlay checked because this is a big design and it will be stitched on fleece, so any extra support will help.
14. To make the design interesting, move the Preferred Stitch Type in-between 0 and 4, and then click Next.
15. On the Design Preview page, click Finish and you have your completed design.



We do not currently have a hoop that is 300mm x 255mm in size. In order to stitch this out, we will use a module called 5D™ Design Aligner to split the design and add alignment stitches to allow the design to match perfectly!


16. Click Copy .
17. QuickLink to 5D™ Design Aligner . The Load Design Wizard opens immediately!
18. Click Change Hoop and the Hoop Selection box will open.
19. Set the Hoop Group to My Hoops and set the Hoop Size to 260mm x 200mm – creative Elite Hoop.
20. Set the Orientation to Horizontal and click OK.
21. Set the Overlap to 30. This allows 30mm of overlap space. Be careful with this number – the larger the overlap space, the more hoopings you might need to do!


22. Set the Alignment Stitches to Corner – this will look like the Corner option for an Endless Embroidery Design.
23. Set the Compensation to Low. Determine your Compensation needed for your design based on how much of the design will overlap. Then click Next.
24. On the Choose Embroidery Page, click Paste , and then click Finish.

Notice your design is centered and there is an overlap area indicated in white. If your background color is light, it might be difficult to see the overlap area. Go to 5D™ Configure to change your background color if needed.







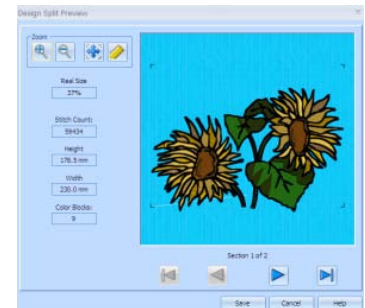
We need to ‘cut’ this design into two separate hoopings. We have allowed ourselves 30 mm of overlap area to adjust where the design will be separated. Notice the left flower and the leaf below the right flower cross over the bottom of the overlap area. It would be best if you can move designs so when separating them you ‘cut’ thru as little as possible.

25. Click Select All . The entire sunflower design will be selected.
26. Drag the sunflower design up towards the top of the hoop. Make sure your corner handles are still squares instead of circles to indicate you are still in the hoop. Notice we are moving the design up so we do not have to cut thru the flower or the leaf.
27. Right-click outside the box to de-select the design.

28. Zoom In  on the overlap area. Notice the boxes along the center line. These are the points which determine where the design will be cut.
29. Move the individual points to avoid the left flower and the right leaf but cut thru the two stems.



30. Click Zoom to Fit .
31. Click Split Design . Design Separator will begin followed by ColorSort. Design Split Preview will open automatically.
32. The design has been split into the two sections. Click Next  to see the second half of the design. Notice the alignment stitches that have been added to the design!
33. Click Save. The Save As box will open. Save the design in your My Designs folder as ‘Sunflowers.vp3.’ Then click Save.
34. Click File, Print Preview. The first page is an overview of the full design showing you where the design is split. Also notice the Split Information at the bottom of the page.
35. Click Next Page and notice on page two you are seeing the bottom of the flowers, and page three you are seeing the top of the flowers. This is essentially the layout pages showing you the layout of the design.
36. Click Next again and you will see the templates for the top of the flowers – marked 01 Sunflowers and thread information, followed by the bottom of the flowers – marked 02 Sunflowers and the thread information.
37. Click Close to close the Print Preview.
38. Click Copy .



(Continued with 4D Stitch Editor exercise)