






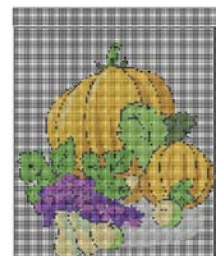
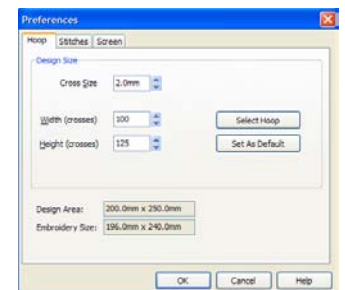
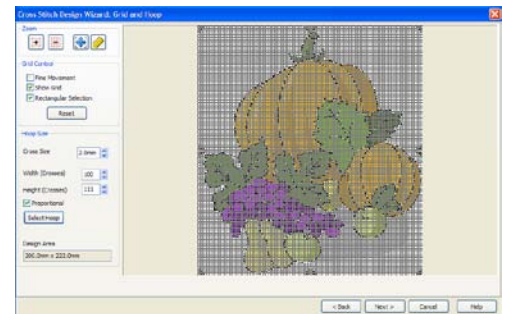


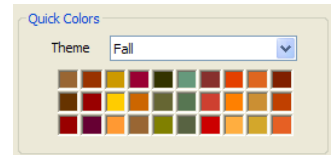
## 5D™ Embroidery Software Owner's Class




### 5D™ Cross Stitcher

1. Open 5D™ Embroidery Extra .
2. QuickLink to 5D™ Cross Stitcher . The 5D™ Cross Stitch Design Wizard – Design Options page will open.
3. Leave Create QuickCross Design selected then click Next.
4. On the Choose Picture page, click Load Picture .
5. Click the drop down arrow next to Look in and find the MyDocuments\5DEmbroidery\Samples\5DEmb\Pics2\Celebration folder.
6. Choose 1CCe020.png, click Open then click Next.
7. On the Grid and Hoop page, set the Cross Size to 2.0mm then click Select Hoop.
8. Set the Hoop Group to Pfaff® creative vision™ and the Hoop Size to 260mm x 200mm – creative Elite Hoop.
9. Set the Orientation to Vertical then click OK.
10. Click Next to go to the Start with Colors page.
11. Change the Thread Range to Robison Anton Rayon 40 and leave the Number of Colors as is then click Next.
12. On the Thread Colors page, leave everything as is, just click Finish and the design will be created.
13. To remove the background white crosses, click Flood Fill  on the left hand side of the screen.
14. Right click on any of the white crosses in the background and they will all disappear. The tool will remain active until you select a new tool.
15. Click Preferences . Under Design Size, change the Height (crosses) to 125. The Width should be 100 then click OK. This will increase the work area.
16. Click Box Select  found on the left hand side of the screen.
17. Click and drag a box around the entire design.
18. Click inside the design and drag it to the bottom of the cross work area to provide more room at the top for lettering.
19. Click anywhere outside the design to release the design.
20. Go to the Letter tab.
21. Choose Fixed Text then click View Font .
22. Use the arrow keys on your keyboard to find Serif Cross 10 then click OK.



23. Left click in the Text box and type 'My Fall Garden'.
24. Under Fixed Text Colors, click the red box to bring up the Color Selection box.
25. Under Quick Colors, set the Theme to Fall, choose your favorite fall color then click OK.



26. Click Apply and the lettering will appear on the screen. Do not click outside the selection box around the lettering until you have finished moving the lettering.
27. Move it to the top above the pumpkin to your liking.
28. Click outside the selection box to release the lettering.
29. Click Save As  and save the design in your C:\5DEmbroidery\MyDesigns folder as Fall garden.krz then click Save.
30. Click 3D Create Stitches  to turn the instruction (.krz) file into an embroidery design.
31. Click Save As  within the 3D Create Stitches screen and save the design in your MyDocuments\5DEmbroidery\MyDesigns folder as Fall garden.vp3 then click Save.

