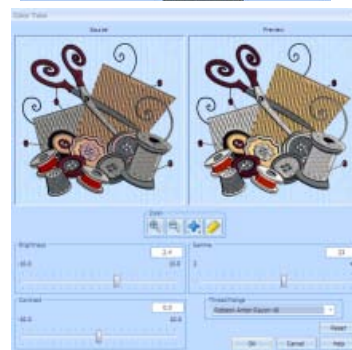
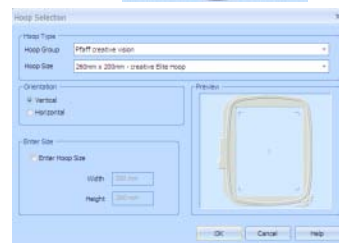


5D™ Embroidery Software Owner's Class

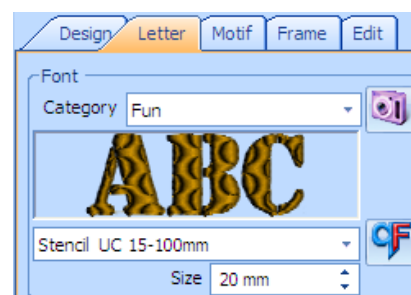
5D™ Embroidery 'Sewing Room'



1. Open 5D™ Embroidery or 5D™ Embroidery Extra .
2. Click Hoop .
3. Set the Hoop Group to Pfaff® creative vision™.
4. Set the Hoop Size to 260mm x 200mm – creative Elite Hoop.
5. Set the Orientation to Vertical then click OK.
6. Click View Designs .
7. Browse to Documents\5DEmbroidery\Samples\5DEmb\Stitch2\Leisure then click OK.
8. Click Page Down three times and select 'Sewing Accessories.vp3.'
9. Click Close Viewer .
10. With the design selected, notice a new option on the Design tab called Color Tone. Click Color Tone.
11. Drag the Gamma bar to the right to increase the brightness and contrast together to about 23.
12. Drag the bar under Brightness to the right to about 2.4.
13. Under Thread Range, click the drop down arrow and choose Robison-Anton Rayon 40. This will convert all the threads to the brand you select!
14. Click OK to set the changes.



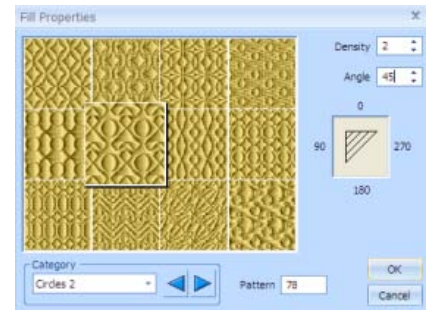
15. Go to the Letter tab.
16. Set the Category to Fun.
17. Click the drop down arrow next to Archery B 30-50mm then select Archery B 30-50mm.
18. Use the arrow keys on your keyboard to view the different fonts in the Fun category.
19. Find Stencil UC 15-100mm to select it.
20. Set the Size to 20 mm.
21. In the Letters box, type 'sewing'.



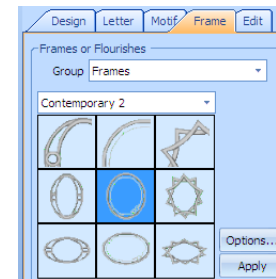
22. Hold down the Ctrl key on your keyboard and touch Enter once.
23. Type 'room'.
24. Choose Full Circle for the Line Type.
25. Make sure the embroidery design is selected on screen.
26. Click Apply. Notice the lettering snaps to the embroidery design!



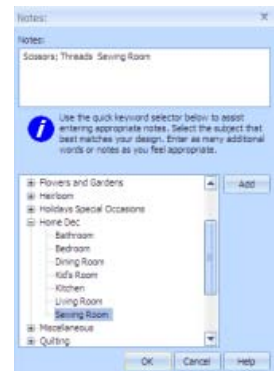
27. Right click within the work area to bring up the Letters Properties box.
28. Click Fill.
29. Under Category, click the drop down arrow and choose Circles 2.
30. Choose the pattern in the second row, second column (Pattern 78).
31. Change the Angle to 45 then click OK.
32. Click OK to close the Letters Properties box and see the change in your lettering!



33. Go to the Frame tab.
34. Under Frames and Flourishes, click the drop down arrow next to Group and choose Frames.
35. Click the drop down arrow next to Appliqué Shields 1 and choose Contemporary 2.
36. Choose the frame in the middle row, middle column (number 5).
37. Make sure the lettering is selected then click Apply. Notice the frame snaps to the lettering!



38. Go back to the Design tab.
39. Click on the frame color.
40. Under Show MyThreadRanges, click the drop down arrow and choose Owner's Class.
41. Select SuMe3-7009 (Pewter) then click OK.
42. Press the Tab key on your keyboard twice to select the lettering.
43. Click ColorSort.
44. Click the one color in the Color Select area.
45. Leave the Thread Range as Robison-Anton Rayon 40.
46. Choose the dark purple in the Quick Colors (2500 New Berry) then click OK.
47. Click Combine All then click ColorSort.
48. Click color 5 and change it to the same dark purple in the Quick Colors (2500 New Berry) then click OK.
49. Change color 7 to Certification Class – color SuMe3-7009 (Pewter) then click OK.
50. Click ColorSort again.
51. Make sure Notes is selected then click Edit.
52. Click the plus mark next to Home Dec.
53. Select 'Sewing Room' and click Add.
54. Click OK to close Notes.
55. Select Settings and click Edit. Notice all the information about the font and frame is shown!
56. Click OK to close Settings.
57. Click Save As and save the design in your MyDocuments/5DEmbroidery/MyDesigns folder as Sewing Room.vp3 then click Save.
58. Click Send 1 to send the design directly to your creative vision™ or as configured in 5D™ Configure.



New Features to Remember

- New Designs!
- Color Tone.
- Change Fill pattern – only the type of stitches are available to change.
- Lettering Snaps to the design.
- Frames.
- Notes and Settings.